

# Specification

**Detection of reverse flow and air**

**High temperature and pressure resistant body structure**

**Easy to installation; Compatible to horizontal, vertical, inlet and return assembling**

**The calculation unit has small dimensions of only 95x80x30 mm and can be separated from the body.**

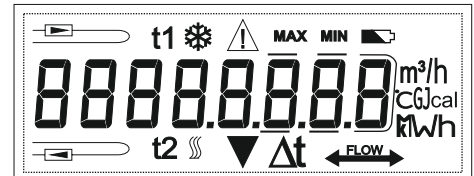
**Compatible to dry and wet type temperature sensors**










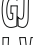
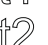

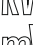

**Supports many communication protocols such as M-BUS,**

**Wireless M-BUS, LORAWAN, MODBUS, pulse out**

**The estimate battery life is most than 10 years**

**It is water and dust resistant with IP-65 certified protection class.**

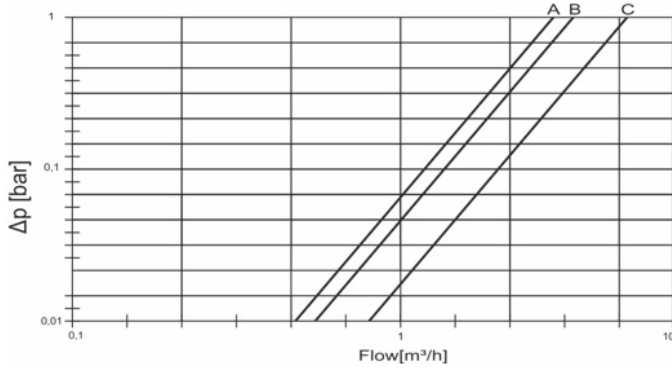


	<b>Battery Level</b>		<b>Heating</b>		<b>Units</b>		<b>Flow Direction</b>
	<b>Intallation Type</b>		<b>Cooling</b>			<b>MAX</b>	<b>MIN</b>
	<b>Inlet Temperature</b>		<b>Warning</b>		<b>GJ</b>	<b>m³/h</b>	
	<b>Outlet Temperature</b>		<b>Button</b>		<b>kWh</b>	<b>8 Digits Display</b>	
					<b>mWh</b>		

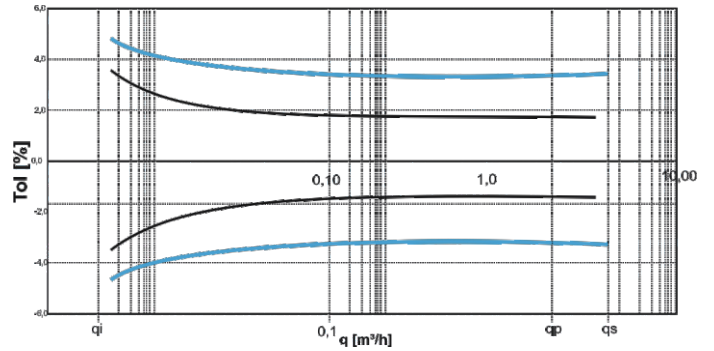
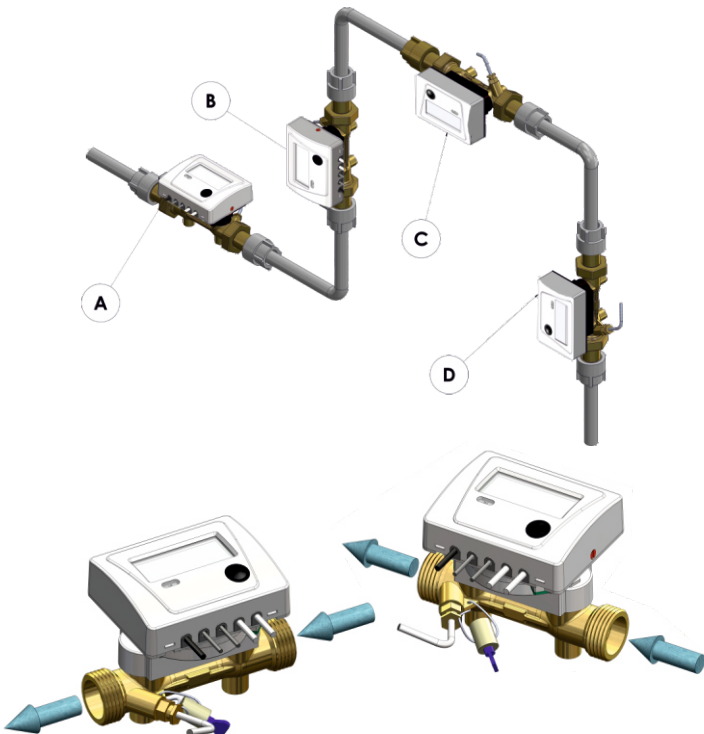
## Technical Data

<b>Nominal Diameter</b>	<b>DN</b>	15	15	20	25	32	40
<b>Counter Length</b>	<b>mm</b>	110	110	130	160	180	200
<b>Join Diameter</b>		G3/4"B	G3/4"B	G1B	G1"1/4B	G1"1/2B	G2B
<b>Nominal Flow Rate</b>	<b>q<sub>s</sub></b>	1,2 m <sup>3</sup> /h	3 m <sup>3</sup> /h	5 m <sup>3</sup> /h	7 m <sup>3</sup> /h	12 m <sup>3</sup> /h	20 m <sup>3</sup> /h
<b>Maximum Flow Rate</b>	<b>q<sub>p</sub></b>	0,6 m <sup>3</sup> /h	1,5 m <sup>3</sup> /h	2,5 m <sup>3</sup> /h	3,5 m <sup>3</sup> /h	6 m <sup>3</sup> /h	10 m <sup>3</sup> /h
<b>Minimum Flow Rate</b>	<b>q<sub>i</sub></b>	6 l/h	15 l/h	25 l/h	35 l/h	60 l/h	100 l/h
<b>Working Temperature</b>	<b>°C</b>	5 - 90 °C	5 - 90 °C	5 - 90 °C	5 - 90 °C	5 - 90 °C	5 - 90 °C
<b>Nominal Pressure</b>	<b>PN</b>	16 bar	16 bar	16 bar	16 bar	16 bar	16 bar
<b>Mounting Type</b>		Vertical Horizontal	Vertical Horizontal	Vertical Horizontal	Vertical Horizontal	Vertical Horizontal	Vertical Horizontal
<b>Measures</b>	<b>mm</b>	l : 110 h : 120 w : 86	l : 110 h : 120 w : 86	l : 130 h : 120 w : 86	l : 160 h : 121 w : 89	l : 180 h : 125 w : 98	l : 200 h : 130 w : 109

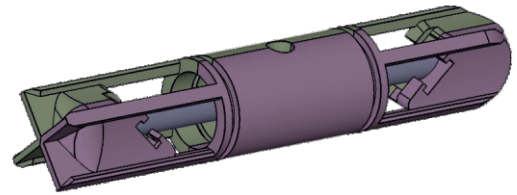
## Accuracy Class 2



Easy to use, compatible to horizontal, vertical, inlet and return assembling



With its patented interior design it provides high precision measurement that prevents turbulence



Compatible with dry and wet type temperature sensors

