

**Single-Jet water meter displays corresponding value R100
It is designed based on the MID Directive with its range.**

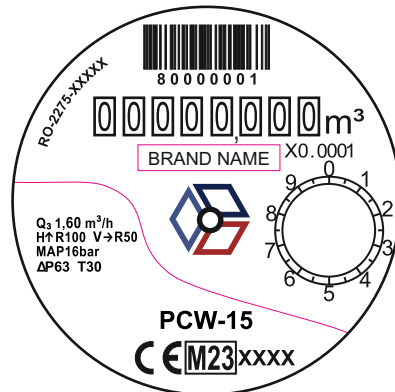
**Optical RF, Wireless M-Bus, M-Bus for remote reading data communication
Compatible optical reflective indicator assemblies.**

Estimated battery life is over 10 years.

It is water and dust resistant with IP-65 certified protection class.

Rated temperature class T30/T90.

Display

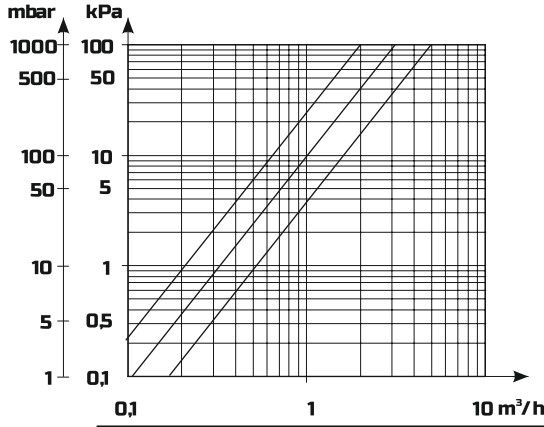


Technical Data

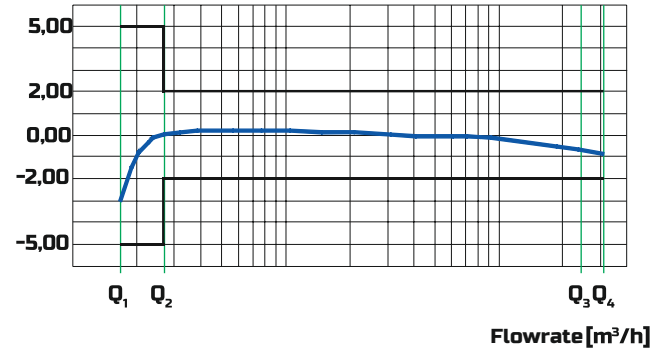
Diameter	DN	15	20	20
Lenght	mm	110	110	130
	Q₁	0.016 m ³ /h	0.040m ³ /h	0.040m ³ /h
	Q₂	0.0256 m ³ /h	0.064 m ³ /h	0.064 m ³ /h
	Q₃	1.6 m ³ /h	4.0 m ³ /h	4.0 m ³ /h
	Q₄	2 m ³ /h	5 m ³ /h	5 m ³ /h
Assembling Type		Horizontal Vertical	Horizontal Vertical	Horizontal Vertical
	mm	l : 110	l : 110	l : 130
		h : 68.5	h : 68.5	h : 68.5
		d : 72	d : 72	d : 72

Accuracy Class 2

Pressure Lost

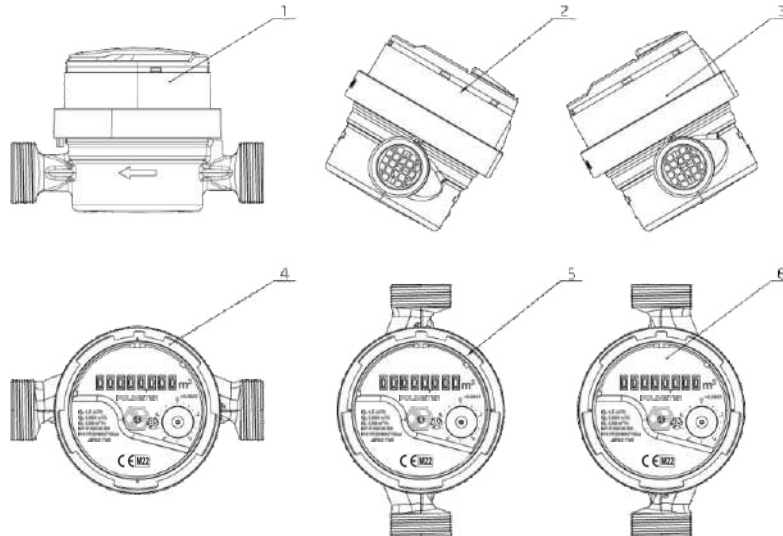


Error [%]



Installation

Diameter	Montaj Yönü			Meter Position
	Horizontal	Vertical	inclined	
(DN15÷20)	x	x	x	* 



PCW-PHW W-MBUS MODÜL

M-BUS Module PCW-PHW is designed for remote readings on water meters. Data is transmitted using the M-Bus communication standard according to PN-EN 13757-3. The use of this open communication protocol creates the remote data reading and transmission environment. Provides full compatibility with a wide range of devices. It also provides event detection logging. The PCW-PHW WM-BUS Module is based on a microprocessor system, optical sensors while making it possible to use, for example, reading data from water meters and determining the direction of water flow. detection ensures complete consistency of water meter readings. Integrated battery for emergency power supply Thanks to this, the re-transmitter module can operate for up to 5 years without power supply from M-Bus.

USE

This module is designed to be compatible with PCW-PHW water meters:

PCW-15-M 1,6 G 3/4" , PCW-20-M 4,0 G 1" Dn20 L=11 cm

PCW-20-M 4,0 G 1" Dn20 L=13 cm ,

PHW-15-M 1,6 G 3/4" , PHW-20-M 4,0 G 1" Dn20 L=11 cm

PHW-20-M 4,0 G 1" Dn20 L=13 cm ,











MAIN FEATURES

- 1- It is not integrated and easy to install on water meters
- 2- Primary power is provided from the M-Bus system (re-transmitter's current draw load unit is UL=1.5mA)
- 3- Emergency power supply ensures continuity of operation in case of power supply interruption in the M-Bus system
- 4- Detecting, recording and signaling irregularities in water consumption measurements and operating the clip-on module using the event signal
- 5- Configuring event thresholds and transfer rate
- 6- Reading measurement information from water meters is completely resistant to any interference caused by external magnetic fields.
- 7- Remote reading of measurement data medium using M-Bus communication protocol and compatibility with the devices that transmit it
- 8- IP65 ingress protection

CONTENT OF THE DATA FRAMEWORK

- 1- Factory ID of the device
- 2- Device date and time
- 3- Recorded date of reading
- 4- Instant volume
- 5- Saved volume
- 6- Measurement time
- 8- Current event flags
- 9- Diagnostic function for optics

OLAY SİNYALLERİ

-  maximum flow
-  minimum flow
-  Reverse current
-  no flow
-  Leak
-  Disconnecting the device
-  Strong light detection
-  low battery
-  Detector error
-  processor reset



Parametreler	
Communication	M-bus
Working Water dedection methot	Optical
Main Battery	3,6 V Lityum battery
Battery Type	4000 mAh ER18505
Protection Class	Ip65
Battery Life	>10years
Aktarım Hızları	2400[b/s]
Cable Type	YTLY 2 x 0,14 mm²
Cable Lenght	1,5 m, 2,3 m, 3,0 m, 6,0 m
Mounting	On The Meter
Diamention	h = 44,2 mm; w = 65,5 mm
Weight	0,079 kg
Working Temp.	0°C ÷ 60°C